

# Data Analytics API

Complete Reference Guide — Indicators, Crossovers, Patterns & Fundamentals

## 1. Technical Indicators

### 1.1 Price and Performance Indicators

Indicator	Description
<b>PRICE_CHANGE</b> <b>1D / 1W / 1M / 3M / 6M / 1Y</b>	Measures the percentage change in price over the last 1 day, week, month, quarter, half-year, or year.
<b>PRICE_CHANGE_YTD</b>	Tracks the percentage price performance from the start of the current calendar year to the present.
<b>ATH</b>	"All-Time High" — the highest price an asset has ever reached since its inception.
<b>HIGH_52W / LOW_52W</b>	The highest and lowest prices recorded for the asset over the preceding 52-week period.
<b>TR_VS_ATR</b>	Compares the current True Range to the Average True Range to measure relative volatility. <a href="#">Tutorial →</a>

## 1.2 Moving Averages (SMA & EMA)

Indicator	Description
<b>SMA</b> (5, 10, 20, 30, 50, 100, 200)	Simple Moving Averages calculate the average price over the specified number of periods.
<b>EMA</b> (9, 12, 13, 26, 50, 100, 200)	Exponential Moving Averages give more weight to recent prices to react faster to trend changes.
<b>VWMA20</b>	Volume Weighted Moving Average for 20 periods — weights price by volume for a more accurate trend view.

## 1.3 Momentum and Oscillators

Indicator	Description
<b>RSI (9, 14, 25)</b>	Relative Strength Index measures the speed and change of price movements to identify overbought or oversold conditions. <a href="#">Tutorial →</a>
<b>STOCH / STOCH_SLOW</b>	Stochastic oscillators compare a closing price to a range of prices. <20 = oversold, >80 = overbought. <a href="#">Tutorial →</a>
<b>STOCH_RSI / _K / _D</b>	Combines Stochastic and RSI to increase sensitivity and find local extremes. <20 = oversold, >80 = overbought. <a href="#">Tutorial →</a>
<b>MACD / _SIGNAL / _HIST</b>	Moving Average Convergence Divergence tracks the relationship between two EMAs to signal trend strength. <a href="#">Tutorial1 →</a> <a href="#">Tutorial2 →</a>
<b>CCI20</b>	Commodity Channel Index for 20 periods. Above +100 = overbought, below -100 = oversold. <a href="#">Tutorial →</a>

<b>WILLIAMS</b>	Williams %R reflects the close relative to the highest high for the look-back period. <a href="#">Tutorial →</a>
<b>ULTIMATE_OSCILLATOR</b>	Combines short, medium, and long-term price action into one oscillator to reduce false signals. <a href="#">Tutorial →</a>
<b>ADX</b>	Average Directional Index quantifies the strength of a trend, regardless of direction. <a href="#">Tutorial →</a>
<b>MOM</b>	Simple Momentum indicator: Close Price (current) – Close Price (10 periods ago).

## 1.4 Volume and Trend Strength

Indicator	Description
<b>VOLUME / _AVG / _CHANGE / _RELATIVE</b>	Total, average, or percentage change in trading activity. Volume Average is over the last 7 periods.
<b>OBV / OBV_TREND</b>	On-Balance Volume uses volume flow to predict price changes and confirm current trends. <a href="#">Tutorial →</a>
<b>BULL_POWER / BEAR_POWER</b>	Developed by Alexander Elder — estimate the strength of buyers (bulls) and sellers (bears). <a href="#">Tutorial →</a>
<b>ADX</b>	Used to determine if a market is trending or in a trading range. <a href="#">Tutorial →</a>

## 1.5 Trend Scoring and Direction

Indicator	Description
<b>SHORT / MEDIUM / LONG_TERM_TREND</b>	Proprietary altFINS ratings (Up, Down, Neutral) based on a multi-indicator trend scoring system. <a href="#">Tutorial1</a> → <a href="#">Tutorial2</a> →
<b>TREND_CHANGE</b>	Signals when a specific trend (Short, Medium, or Long-term) has recently flipped direction. <a href="#">Tutorial</a> →
<b>SMA_TREND</b> (5, 10, 20, 30, 50, 100, 200)	Indicates whether the specific simple moving average is currently sloping up or down.
<b>EMA_TREND</b> (9, 12, 13, 26, 50, 100, 200)	Monitors the directional slope of the specified exponential moving average.

## 1.6 Volatility and Levels

Indicator	Description
<b>BOLLINGER_BAND UPPER / LOWER</b>	Statistical bands placed above and below a moving average to identify volatility and potential reversals.
<b>ATR</b>	Average True Range measures market volatility by decomposing the entire range of an asset price.

## 1.7 altFINS Specific Indicators (IR\_ Prefix)

Indicator	Description
<b>IR_ Prefix</b>	Indicators prefixed with "IR" represent altFINS' proprietary directional signals (e.g., Bullish/Bearish).
<b>IR_NEW_HIGH_CREATED</b> (_5, _10, _15, _20, _30, _50)	Signals if a new high has been established within the specified number of recent periods. <a href="#">Tutorial →</a>
<b>IR_NEW_LOW_CREATED</b> (_5, _10, _15, _20, _30, _50)	Tracks the creation of new price lows to signal potential bearish breakdowns or capitulation. <a href="#">Tutorial →</a>
<b>IR_RSI9 / 14 / 25</b>	Values: Overbought (RSI > 70), Neutral (30–70), or Oversold (RSI < 30).
<b>IR_STOCH /</b> <b>IR_STOCH_SLOW</b>	Values: Overbought (> 80), Neutral (20–80), or Oversold (< 20).
<b>IR_WILLIAMS</b>	Values: Overbought (> 80), Neutral (20–80), or Oversold (< 20).
<b>IR_CCI20</b>	Values: Overbought (> +100), Neutral (–100 to +100), or Oversold (< –100).

View live examples on the altFINS [Crypto Screener →](#)

Overview	Charts	Performance	Trend	Momentum	Patterns	Revenue	Revenue charts	Mcap / S	TVL	TVL charts	Order by	Market Cap (B)	1d
Coin	MACD	Age	MACD Hist	RSI9 Indicator	RSI14 Indicator	RSI25 Indicator	STOCH Slo.	STOCH Fast Indicator	Williams Indicator	CCI Indic.			
BTC Bitcoin	Bearish	11	Bearish	▼ Oversold	→ Neutral	→ Neutral	→ Neutral	▼ Oversold	→ Neutral	▼ Oversold			
ETH Ethereum	Bearish	11	Bearish	▼ Oversold	→ Neutral	→ Neutral	→ Neutral	▼ Oversold	→ Neutral	▼ Oversold			
BNB BNB	Bearish	11	Bearish	→ Neutral	→ Neutral	→ Neutral	→ Neutral	▼ Oversold	→ Neutral	▼ Oversold			
XRP XRP	Bearish	18	Bearish	▼ Oversold	→ Neutral	→ Neutral	→ Neutral	▼ Oversold	→ Neutral	▼ Oversold			
SOL Solana	Bearish	12	Bearish	▼ Oversold	→ Neutral	→ Neutral	→ Neutral	▼ Oversold	▼ Oversold	▼ Oversold			
TRX TRON	Bearish	11	Bearish	→ Neutral	→ Neutral	→ Neutral	▼ Oversold	▼ Oversold	▼ Oversold	▼ Oversold			
DOGE Dogecoin	Bearish	15	Bearish	▼ Oversold	→ Neutral	→ Neutral	→ Neutral	▼ Oversold	→ Neutral	▼ Oversold			
ADA Cardano	Bearish	13	Bearish	▼ Oversold	→ Neutral	→ Neutral	→ Neutral	▼ Oversold	→ Neutral	▼ Oversold			

## 2. Indicator Crossover Analytics

Crossover Events — Identified by the "X\_" prefix, these signal when one price or indicator line intersects another. Possible values are "Above" or "Below", with associated timestamps.

### 2.1 Moving Average Crossovers (SMA & EMA)

Moving average crossovers are primary signals for trend identification. A "Bullish Crossover" occurs when a shorter-term average crosses above a longer-term one; a "Bearish Crossover" when it crosses below.

Indicator	Description
Price vs. SMA / EMA	e.g. X_LAST_PRICE_CROSS_SMA5 — triggers when the current price moves above or below a moving average. Early trend signal.
SMA / EMA vs. SMA / EMA	e.g. X_SMA5_CROSS_SMA10 — signals a potential change in trend direction between two time periods.
Golden / Death Cross	X_SMA50_CROSS_SMA200 — the classic Golden Cross (Bullish) or Death Cross (Bearish) for major long-term shifts.

### 2.2 Momentum & Oscillator Crossovers

Indicator	Description
RSI Thresholds	X_RSI14_CROSS_30 / _50 / _70 — signals when RSI moves into oversold (<30), neutral (50), or overbought (>70) territory.

<b>Stochastics</b>	X_STOCH_CROSS_20 / _80 — identifies when the Stochastic oscillator enters or exits extreme zones.
<b>MACD Signal Line</b>	X_MACD_CROSS_MACD_SIGNAL_LINE — triggers when MACD crosses its 9-period EMA (Signal Line).
<b>CCI &amp; Williams</b>	X_CCI20_CROSS_100 and X_WILLIAMS_CROSS_MINUS20 signal overextended conditions.
<b>ADX &amp; Ult. Oscillator</b>	X_ADX_CROSS_20 identifies trend strength; X_ULTIMATE_OSCILLATOR_CROSS_30 signals a potential bullish recovery.

## 2.3 Volatility & Volume Crossovers

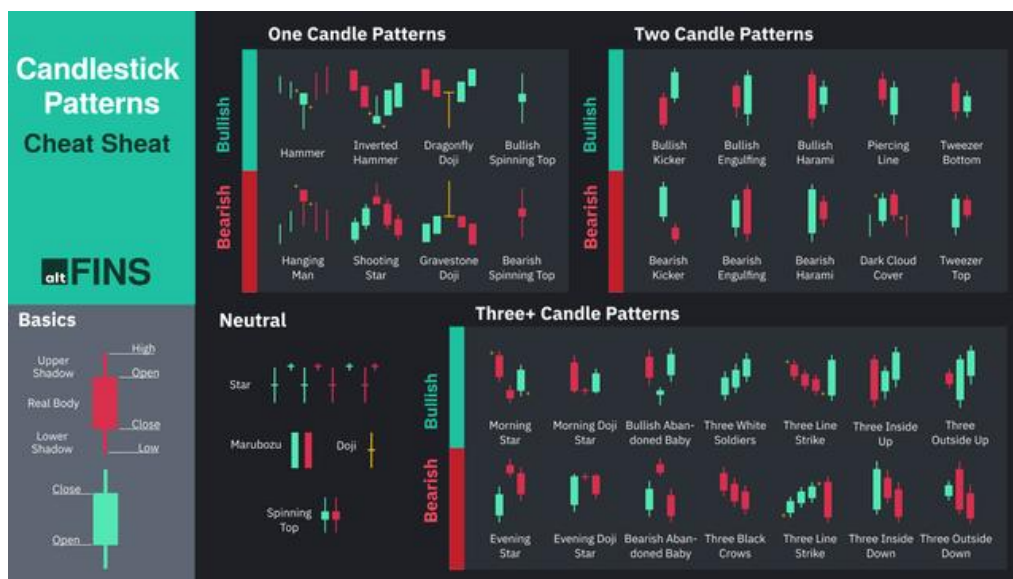
Indicator	Description
<b>Bollinger Bands</b>	X_LAST_PRICE_CROSS_BOLLINGER_BAND_UPPER / _LOWER — signals price breakouts or mean-reversion opportunities.
<b>VWMA</b>	X_LAST_PRICE_CROSS_VWMA20 — triggers when price crosses the Volume Weighted MA for a conviction-based trend signal.

### 3. Candlestick Patterns

altFINS detects over 30 different candlestick patterns and can filter by when the pattern was detected (1–5 intervals ago).

[Tutorial1 →](#)

[Tutorial2→](#)



### 4. Fundamental Analytics

These metrics help investors identify projects with real economic traction, user fees, capital lock-ups (TVL), and valuation ratios.

[Tutorial1→](#)

[Tutorial2→](#)

[Tutorial3→](#)



## 4.1 Revenue Metrics (TR & PR)

Revenue reflects real protocol usage and sustainability. It is divided into total fees paid by users and the portion captured by the protocol itself.

Indicator	Description
<b>TOTAL_REVENUE (TR)</b>	The total sum of user fees collected by a platform (e.g., trading fees on a DEX). Includes supply-side revenue and protocol revenue.
<b>TOTAL_REVENUE_ANNUALIZED</b>	Estimate of yearly earnings based on recent revenue activity — used to filter for established projects.
<b>TOTAL_REVENUE_1W / 1M</b>	The total revenue generated specifically over the last week or month.
<b>PROTOCOL_REVENUE (PR)</b>	The specific share of fees directed to the protocol's treasury or token holders, excluding supply-side rewards.
<b>PROTOCOL_REVENUE_1W / 1M / ANNUALIZED</b>	Periodic and projected earnings that accrue strictly to the protocol project.

## 4.2 Valuation Ratios (Mcap / Sales / PR)

These ratios work similarly to Price-to-Earnings (P/E) or Price-to-Sales (P/S) in traditional finance to identify overvalued or undervalued assets.

Indicator	Description
<b>MARKET_CAP_SALES (Mcap/S or Mcap/TR)</b>	Compares the project's market cap to annualized total revenue. A lower ratio (e.g., <10x) often suggests undervaluation.

<b>MARKET_CAP_PR</b> (Mcap/PR)	Compares market cap to protocol-specific revenue — evaluates value actually accruing to the token.
<b>MARKET_CAP_FULLY_DILUTED</b> (FDV)	Total market value if all tokens (including those not yet in circulation) were issued at the current price.
<b>MARKET_CAP</b>	The current total dollar value of all circulating tokens.
<b>CMC_RANK</b>	The project's current ranking by market capitalization on CoinMarketCap.

### 4.3 Total Value Locked (TVL)

TVL is a critical metric for DeFi, representing the total amount of assets currently deposited in a protocol's smart contracts.

Indicator	Description
<b>TVL</b>	Total dollar value of all assets locked. High TVL indicates high user trust and protocol adoption.
<b>MARKET_CAP_TVL</b>	Ratio comparing market cap to TVL. A lower ratio (e.g., <0.1x) may indicate undervaluation.

### 4.4 Performance Metrics

These fields measure the growth or decline of the above indicators over specific timeframes (7, 30, 90, 180, and 365 days).

Indicator	Description
<b>[METRIC]_PERFORMANCE</b>	Percentage change in the specified metric over a standard 24-hour interval.
<b>[METRIC]_PERFORMANCE</b> _7D / _30D / _90D / _180D / _365D	Tracks growth momentum (e.g., TOTAL_REVENUE_PERFORMANCE_30D) to identify rising stars or fading protocols.

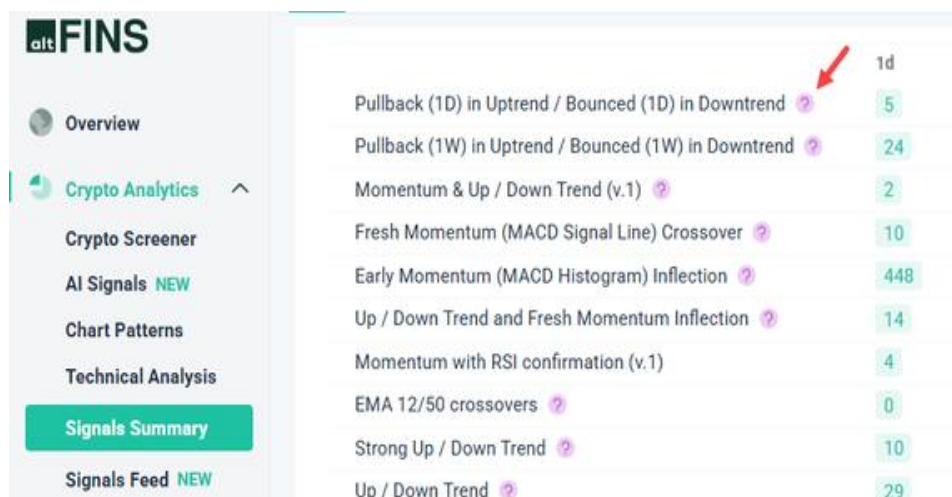
## 5. Technical Analysis

altFINS analysts conduct [technical analysis](#) of the top 50+ coins. The analysis is simple and consistent, following the key concepts of TA: 1) Trend 2) Momentum 3) Volume 4) Chart Patterns 5) Support & Resistance. [Learn more →](#)

## 6. Signal Feed

A stream of the latest signals generated by altFINS. Spot new trade opportunities as they appear without scanning the entire market manually. Currently available on the 1D time interval only. [Explore Signal Feed →](#)

For more information behind each signal, visit the [Signals Summary page →](#) and use the '?' icons for details.



	1d
Pullback (1D) in Uptrend / Bounced (1D) in Downtrend ?	5
Pullback (1W) in Uptrend / Bounced (1W) in Downtrend ?	24
Momentum & Up / Down Trend (v.1) ?	2
Fresh Momentum (MACD Signal Line) Crossover ?	10
Early Momentum (MACD Histogram) Inflection ?	448
Up / Down Trend and Fresh Momentum Inflection ?	14
Momentum with RSI confirmation (v.1)	4
EMA 12/50 crossovers ?	0
Strong Up / Down Trend ?	10
Up / Down Trend ?	29

Signal	Bullish name	Bearish name
EARLY_MOMENTUM_MACD_HISTOGRAM_INFLECTION	Early Bullish Momentum Inflection - rising MACD Histogram bars	Early Bearish Momentum Inflection - declining MACD Histogram bars
EMA_12_50_CROSSOVERS	Bullish Cross EMA 12 above EMA 50	Bearish Cross EMA 12 below EMA 50
FRESH_MOMENTUM_MACD_SIGNAL_LINE_CROSSOVER	Fresh Bullish Momentum (MACD Crossover)	Fresh Bearish Momentum (MACD Crossover)
MOMENTUM_RSI_CONFIRMATION	Bullish Momentum with RSI confirmation (MACD crossover and RSI above 50)	Bearish Momentum with RSI confirmation (MACD crossover and RSI below 50)
MOMENTUM_UP_DOWN_TREND	Bullish Momentum (MACD crossover) in Uptrend	Bearish Momentum (MACD crossover) in Downtrend
PULLBACK_UP_DOWN_TREND_1W	Pullback in Uptrend (buy the dip)	Bounced Up in Downtrend (sell the bounce)
PULLBACK_UP_DOWN_TREND	Pullback (1W) in Uptrend - Buy Dip Opportunity	Bounced (1W) in Downtrend - Sell Bounce Opportunity
SIGNALS_SUMMARY_ABANDONED_BABY	Abandoned Baby	
SIGNALS_SUMMARY_ABCD	ABCD	
SIGNALS_SUMMARY_ASCENDING_TRIANGLE	Ascending Triangle	
SIGNALS_SUMMARY_BIG_MOVEMENT	Big Movement	
SIGNALS_SUMMARY_BOLLBAND_PRICE_UPPER_LOWER	Bollinger Band - Price Broke Upper / Lower Band	
SIGNALS_SUMMARY_BUTTERFLY	BUTTERFLY	
SIGNALS_SUMMARY_CHANNEL_DOWN	Channel Down	
SIGNALS_SUMMARY_CHANNEL_UP	Channel Up	
SIGNALS_SUMMARY_CONSECUTIVE_CANDLES	Consecutive Candles	
SIGNALS_SUMMARY_DARK_CLOUD_COVER	Dark Cloud Cover	
SIGNALS_SUMMARY_DESCENDING_TRIANGLE	Descending Triangle	
SIGNALS_SUMMARY_DOJI	Doji	
SIGNALS_SUMMARY_DOUBLE_BOTTOM	Double Bottom	
SIGNALS_SUMMARY_DOUBLE_TOP	Double Top	
SIGNALS_SUMMARY_DRAGONFLY_DOJI_V2	Perfect Dragonfly	
SIGNALS_SUMMARY_DRAGONFLY_DOJI	Dragonfly Doji	
SIGNALS_SUMMARY_DRIVE	Drive	
SIGNALS_SUMMARY_EMA_100_200	Bullish Cross EMA 100 above EMA 200	Bearish Cross EMA 100 below EMA 200
SIGNALS_SUMMARY_EMA_12_26	Bullish Cross EMA 12 above 26	Bearish Cross EMA 12 below 26
SIGNALS_SUMMARY_EMA_26_50	Bullish Cross EMA 26 above EMA 50	Bearish Cross EMA 26 below EMA 50
SIGNALS_SUMMARY_EMA_50_100	Bullish Cross EMA 50 above EMA 100	Bearish Cross EMA 50 below EMA 100
SIGNALS_SUMMARY_EMA_50_200	Bullish Cross EMA 50 above EMA 200	Bearish Cross EMA 50 below EMA 200
SIGNALS_SUMMARY_EMA_9_12	Bullish Cross EMA 9 above EMA 12	Bearish Cross EMA 9 below EMA 12
SIGNALS_SUMMARY_EMERGING_PATTERNS	Emerging Patterns	
SIGNALS_SUMMARY_ENGULFING	Engulfing	
SIGNALS_SUMMARY_EVENING_DOJI_STAR	Evening Doji Star	
SIGNALS_SUMMARY_EVENING_STAR	Evening Star	
SIGNALS_SUMMARY_FALLING_WEDGE	Falling Wedge	
SIGNALS_SUMMARY_FLAG	Flag	
SIGNALS_SUMMARY_FUNDAMENTALS_ANNUALIZED_TR_ABOVE	Annualized Revenue above \$1 million	
SIGNALS_SUMMARY_FUNDAMENTALS_MCAP_TR	Valuation under 10x (Market cap / Revenue)	
SIGNALS_SUMMARY_FUNDAMENTALS_MCAP_TVL	Low Valuation (Market Cap / TVL < 0.1x)	
SIGNALS_SUMMARY_FUNDAMENTALS_TR_GROWTH	Revenue growth (1 month) above 10%	
SIGNALS_SUMMARY_FUNDAMENTALS_TVL_ABOVE	Total Value Locked (TVL) above \$10M	
SIGNALS_SUMMARY_FUNDAMENTALS_TVL_GROWTH	TVL growth above than 10% (monthly change)	
SIGNALS_SUMMARY_GARTLEY	Gartley	
SIGNALS_SUMMARY_GRAVESTONE_DOJI_V2	Perfect Gravestone	
SIGNALS_SUMMARY_GRAVESTONE_DOJI	Gravestone Doji	
SIGNALS_SUMMARY_HAMMER	Hammer	
SIGNALS_SUMMARY_HANGING_MAN	Hanging Man	
SIGNALS_SUMMARY_HARAMI	Harami	
SIGNALS_SUMMARY_HEAD_AND_SHOULDERS	Head And Shoulders	
SIGNALS_SUMMARY_HORIZONTAL_RESISTANCE	Horizontal Resistance (approach or breakout)	
SIGNALS_SUMMARY_HORIZONTAL_SUPPORT	Horizontal Support (Approaching or Breakout)	
SIGNALS_SUMMARY_INVERSE_HEAD_AND_SHOULDERS	Inverse Head And Shoulders	
SIGNALS_SUMMARY_INVERTED_HAMMER	Inverted Hammer	
SIGNALS_SUMMARY_KICKER	Kicker	
SIGNALS_SUMMARY_MA_RIBBON	MA Ribbon	
SIGNALS_SUMMARY_MORNING_DOJI_STAR	Morning Doji Star	
SIGNALS_SUMMARY_MORNING_STAR	Morning Star	
SIGNALS_SUMMARY_NEW_LOCAL_HIGH_LOW_10_PERIODS	New Local High (10 periods)	New Local Low (10 periods)
SIGNALS_SUMMARY_NEW_LOCAL_HIGH_LOW_15_PERIODS	New Local High (15 periods)	New Local Low (15 periods)
SIGNALS_SUMMARY_NEW_LOCAL_HIGH_LOW_20_PERIODS	New Local High (20 period)	New Local Low (20 period)
SIGNALS_SUMMARY_NEW_LOCAL_HIGH_LOW_30_PERIODS	New Local High (30 periods)	New Local Low (30 period)
SIGNALS_SUMMARY_NEW_LOCAL_HIGH_LOW_5_PERIODS	New Local High (5 periods)	New Local Low (5 periods)
SIGNALS_SUMMARY_NEW_LOCAL_HIGH_LOW_50_PERIODS	New Local High (50 period)	New Local Low (50 periods)
SIGNALS_SUMMARY_OBV_TREND	On Balance Volume (OBV) Trend	
SIGNALS_SUMMARY_OVERSOLD_OVERBOUGHT_MOMENTUM	Oversold with Bullish Momentum Shift	Overbought with Bearish Momentum Shift
SIGNALS_SUMMARY_OVERSOLD_OVERBOUGHT_UP_DOWN	Oversold (RSI < 40) in Uptrend (Possible Bounce Ahead)	Overbought (RSI > 70) in Downtrend (Possible Pullback Ahead)
SIGNALS_SUMMARY_PATTERN_BREAKOUTS_UPTREND_DOWNTREND	Pattern Breakouts in Uptrend	Pattern Breakouts in Downtrend
SIGNALS_SUMMARY_PATTERN_BREAKOUTS	Chart Pattern Breakout	
SIGNALS_SUMMARY_PENNANT	Pennant	
SIGNALS_SUMMARY_PIERCING_LINE	Piercing Line	
SIGNALS_SUMMARY_POINT_EXTENSION	Point Extension	
SIGNALS_SUMMARY_POINT_RETRACEMENT	Point Retracement	
SIGNALS_SUMMARY_PRICE_EMA_100_200	Bullish Price Cross above EMA 100 and EMA 200	Bearish Price Cross below EMA 100 and EMA 200
SIGNALS_SUMMARY_PRICE_EMA_12_26	Bullish Price Cross above EMA 12 and EMA 26	Bearish Price Cross below EMA 12 and EMA 26
SIGNALS_SUMMARY_PRICE_EMA_50_100	Bullish Price Cross above EMA 50 and EMA 100	Bearish Price Cross below EMA 50 and EMA 100
SIGNALS_SUMMARY_PRICE_EMA_9_12	Bullish Price Cross above EMA 9 and EMA 12	Bearish Price Cross below EMA 9 and EMA 12
SIGNALS_SUMMARY_PRICE_SMA_10_20	Bullish Price Cross above SMA 10 and SMA 20	Bearish Price Cross below SMA 10 and SMA 20
SIGNALS_SUMMARY_PRICE_SMA_100_200	Bullish Price Cross above SMA 100 and SMA 200	Bearish Price Cross below SMA 100 and SMA 200
SIGNALS_SUMMARY_PRICE_SMA_30_50	Bullish Price Cross above SMA 30 and SMA 50	Bearish Price Cross below SMA 30 and SMA 50
SIGNALS_SUMMARY_PRICE_SMA_5_10	Bullish Price Cross above SMA 5 and SMA 10	Bearish Price Cross below SMA 5 and SMA 10
SIGNALS_SUMMARY_RECENT_ATH_NOT_OVERBOUGHT	Recent ATH, still within 10% of ATH, and not very overbought	
SIGNALS_SUMMARY_RECENT_ATH_PULLBACK_MACD_INFLECT	Recent ATH, pulled back but MACD Histogram is starting to inflect bullish	
SIGNALS_SUMMARY_RECENT_ATH	Recent ATH	
SIGNALS_SUMMARY_RECTANGLE	Rectangle	
SIGNALS_SUMMARY_RISING_WEDGE	Rising Wedge	
SIGNALS_SUMMARY_RSI_14	Oversold RSI below 30 (Relative Strength Index -14)	Overbought RSI above 70 (Relative Strength Index -14)
SIGNALS_SUMMARY_RSI_25	Oversold RSI below 30 (Relative Strength Index -25)	Overbought RSI above 70 (Relative Strength Index -25)
SIGNALS_SUMMARY_RSI_9	Oversold RSI below 30 (Relative Strength Index -9)	Overbought RSI above 70 (Relative Strength Index -9)
SIGNALS_SUMMARY_RSI_DIVERGENCE	RSI divergence	
SIGNALS_SUMMARY_RVOL_SPIKE_IN_UPTREND_DOWNTREND	RVOL (Relative Volume) Increase in Uptrend	RVOL (Relative Volume) Increase in Downtrend
SIGNALS_SUMMARY_SHOOTING_STAR	Shooting Star	
SIGNALS_SUMMARY_SHORT_TERM_TREND_UPGRADE_DOWNGRADE	Short-Term Trend Upgrade	Short-Term Trend Downgrade
SIGNALS_SUMMARY_SMA_10_20	Bullish Cross SMA 10 above SMA 20	Bearish Cross SMA 10 below SMA 20
SIGNALS_SUMMARY_SMA_100_200	Bullish Cross SMA 100 above SMA 200	Bearish Cross SMA 100 below SMA 200
SIGNALS_SUMMARY_SMA_20_30	Bullish Cross SMA 20 above SMA 30	Bearish Cross SMA 20 below SMA 30
SIGNALS_SUMMARY_SMA_30_50	Bullish Cross SMA 30 above SMA 50	Bearish Cross SMA 30 below SMA 50
SIGNALS_SUMMARY_SMA_5_10	Bullish Cross SMA 5 above SMA 10	Bearish Cross SMA 5 below SMA 10
SIGNALS_SUMMARY_SMA_50_200	Bullish (Golden) Cross SMA 50 above SMA 200	Bearish (Death) Cross SMA 50 below SMA 200
SIGNALS_SUMMARY_SPINNING_TOP	Spinning Top	
SIGNALS_SUMMARY_STOCH_RSI	Oversold Stochastic RSI Fast (3, 3, 14, 14) below 20	Overbought Stochastic RSI Fast (3, 3, 14, 14) above 80
SIGNALS_SUMMARY_STOCH	Oversold Stochastic (14,3,3) is below 20 level	Overbought Stochastic (14,3,3) is above 80 level
SIGNALS_SUMMARY_STRONG_UP_DOWN_TREND	Strong Uptrend across Short- Medium- and Long-Term	Strong Downtrend across Short- Medium- and Long-Term
SIGNALS_SUMMARY_THREE_BLACK_CROWS	Three Black Crows	
SIGNALS_SUMMARY_THREE_INSIDE_DOWN	Three Inside Down	
SIGNALS_SUMMARY_THREE_INSIDE_UP	Three Inside Up	
SIGNALS_SUMMARY_THREE_LINE_STRIKE	Three Line Strike	
SIGNALS_SUMMARY_THREE_OUTSIDE_DOWN	Three Outside Down	
SIGNALS_SUMMARY_THREE_OUTSIDE_UP	Three Outside Up	
SIGNALS_SUMMARY_THREE_WHITE_SOLDIERS	Three White Soldiers	
SIGNALS_SUMMARY_TOP_GAINERS	Top Gainers (last 1 day)	
SIGNALS_SUMMARY_TOP_LOSERS	Top Losers	
SIGNALS_SUMMARY_TR_ATR_1x	Volatility Increase: Current Range is Above 1x ATR (Average True Range)	
SIGNALS_SUMMARY_TR_ATR_2x	Volatility Increase: Current Range is Above 2x ATR (Average True Range)	
SIGNALS_SUMMARY_TR_ATR_3x	Volatility Increase: Current Range is Above 3x ATR (Average True Range)	
SIGNALS_SUMMARY_TR_ATR_4x	Volatility Spike: Current Range is Above 4x ATR (Average True Range)	
SIGNALS_SUMMARY_TR_ATR_5x	Volatility Spike: Current Range is Above 5x ATR (Average True Range)	
SIGNALS_SUMMARY_TRADING_RANGE_V2	Trading in a Range (v.2)	
SIGNALS_SUMMARY_TRADING_RANGE	Trading in a Range (v.1)	
SIGNALS_SUMMARY_TRIANGLE	Triangle	
SIGNALS_SUMMARY_TRIPLE_BOTTOM	Triple Bottom	
SIGNALS_SUMMARY_TRIPLE_TOP	Triple Top	
SIGNALS_SUMMARY_TWEezer_BOTTOM	Tweezer Bottom	
SIGNALS_SUMMARY_TWEezer_TOP	Tweezer Top	
SIGNALS_SUMMARY_UNUSUAL_VOLUME_GAINERS_DECLINERS	Unusual Volume Gainer	Unusual Volume Decliner
SIGNALS_SUMMARY_VERY_OVERSOLD_OVERBOUGHT	Very Oversold (RSI 14 below 25)	Very Overbought (RSI 14 above 75)
SIGNALS_SUMMARY_WILLIAMS	Oversold (below -80) Williams Percentage Range (14)	Overbought (above -20) Williams Percentage Range (14)
SIGNALS_SUMMARY_WITHIN_5_PERCENT_ATH_BULLISH_MACD_CROSS	Within 5% of ATH and recent bullish MACD crossover	
SIGNALS_SUMMARY_WITHIN_5_PERCENT_ATH_BULLISH_MACD_HISTO	Within 5% of ATH and bullish inflection in momentum (MACD Histogram bars rising)	
SIGNALS_SUMMARY_WITHIN_5_PERCENT_ATH_NOT_OVERBOUGHT	Within 5% of ATH and not very overbought (RSI < 70)	
SIGNALS_SUMMARY_WITHIN_5_PERCENT_ATH	Within 5% of ATH	
UP_DOWN_TREND_AND_FRESH_MOMENTUM_INFLECTION	Uptrend and Fresh Bullish Momentum (rising MACD Histogram bars)	Downtrend and Fresh Bearish Momentum (declining MACD Histogram bars)
UP_DOWN_TREND	Uptrend across Short- Medium- and Long-Term	Downtrend across Short- Medium- and Long-Term

## 7. MCP Server

MCP (Model Context Protocol) server provides AI agents and applications with direct, structured access to crypto market data, indicators, and trading signals — built specifically for LLM-native workflows.

**Fast, secure, read-only queries across 150+ technical indicators — no custom integrations required.**

### Use Cases

- AI trading & execution agents
- Crypto research and screening bots
- Portfolio analysis copilots
- Strategy backtesting & signal validation
- Crypto analytics dashboard

**altFINS**

[www.altfins.com](https://www.altfins.com)